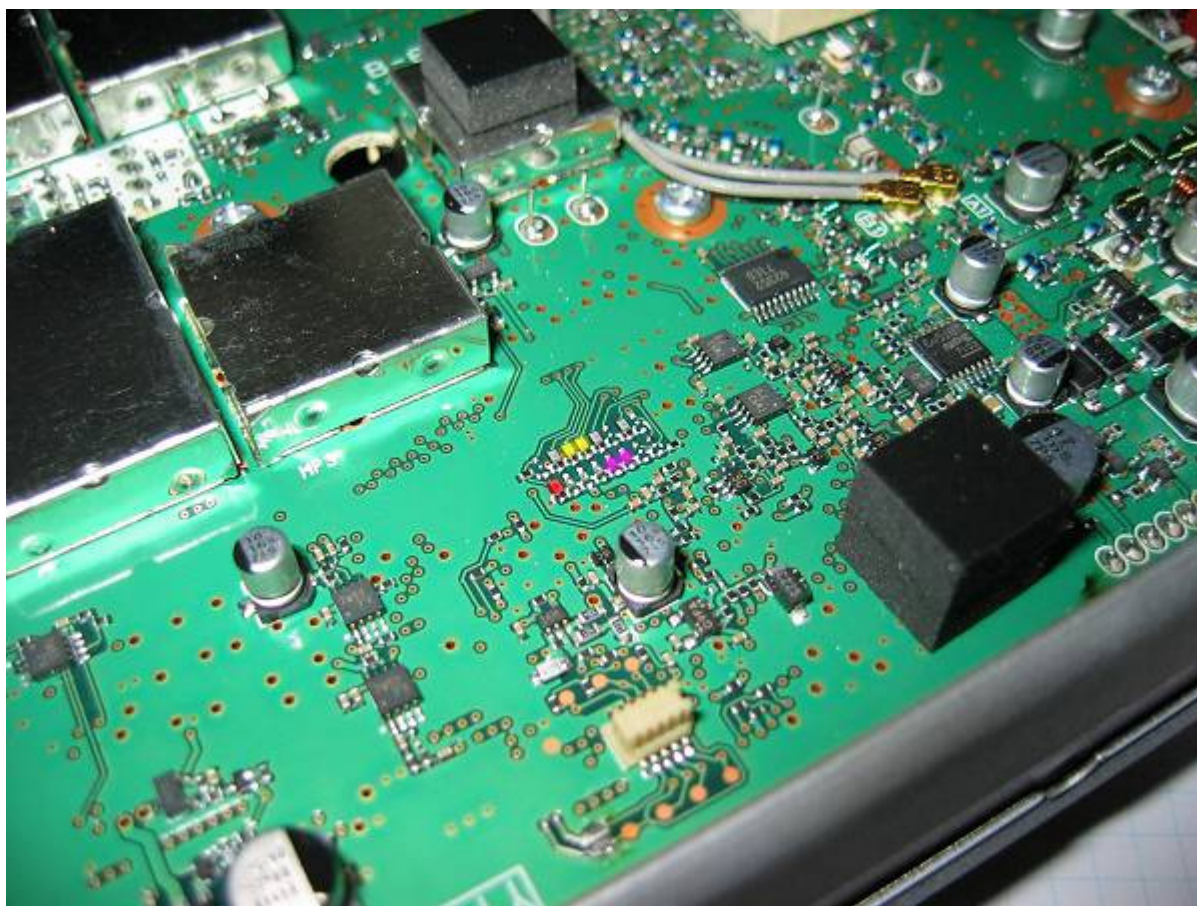

Expand TX and RX for IC-E2820 (European version)

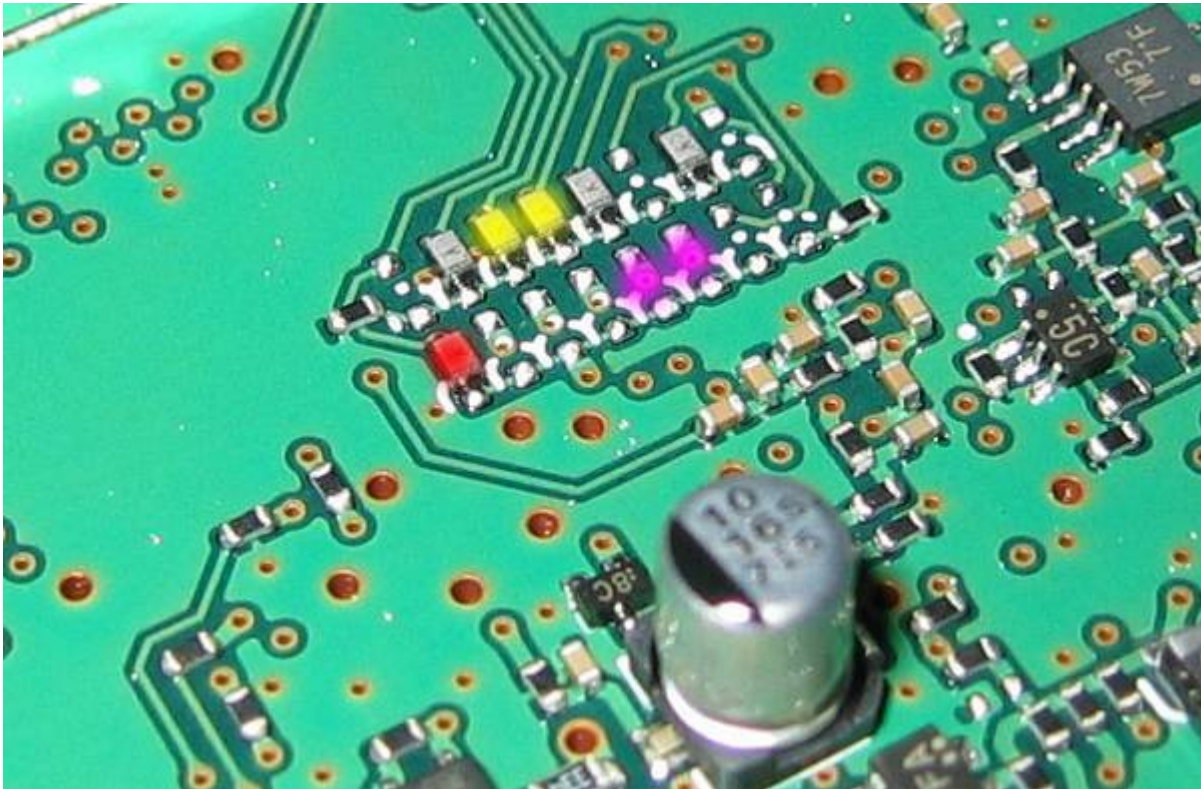
Author: HB9DRX

- Open the bottom part of the radio
- Remove red diode: crossband & sub-band remote control enabled.
- Remove 2 yellow diodes: VHF/UHF TX full expand.
- Remove 2 pink diodes: VHF/UHF RX full expand. (Standard in most EU-versions)

Be careful and do the mods at your own risk! Mod 100% tested on my IC-E2820.

73!! HB9DRX





This article is printed with permission from mods.dk the 18-09-2008. This printed article must only be used for non-commercial purposes; this is only for private use.

© Copyright mods.dk 1996 - 2008